

## INSIDE

- 2 | Calendar
- 2 | Co-op Hall of Fame nomination sought
- 3 | Co-op members may be due cash and property
- 4 | Kansas Touchstone Energy annual meeting

Have an idea  
or  
a story  
for  
Rural Power?

Call  
(785) 478-4554

Fax  
(785) 478-4852

or Email  
ruralpower@kec.org



## Midwest Energy receives Smart Grid funding

Midwest Energy is one of more than 50 electric cooperatives and public power districts in 14 states to receive funding to invest in the deployment of local smart grid technology.

Midwest Energy will receive \$712,257 in federal stimulus money. Nationally, President Obama announced that \$3.4 billion in grants will be awarded to utilities. Of this total, over \$215 million will go to electric cooperatives. The Department of Energy awarded 100 grants in all.

Funds issued to Midwest Energy will go toward the replacement of electromechanical relays at the Knoll Substation, north of Hays.

The new project will involve the installation of a new control house and new SEL relays at the substation. Each grant must be matched by the participating utility, according to DOE.

**“The opportunity to make this upgrade with as much as 50 percent federal funding is of significant long-term benefit to our customers.”**

RAY HAROLD

“The opportunity to make this upgrade with as much as 50 percent federal funding is of significant long-term benefit to our customers,” said Ray Harold, Midwest Energy’s vice president of engineering. “In addition to the reliability benefits that we foresee for Midwest Energy, we believe that this improvement will also help facilitate the development of renewable energy resources in the area over the next several years.”

Glenn English, CEO of the National Rural Electric Cooperative Association, pointed out that cooperatives are on the forefront of energy innovation.

“The impressive number of electric cooperatives and public power districts who applied for smart grid investment grants – almost 300 – indicates the tremendous momentum among cooperatives in the push to modernize the nation’s bulk power grid,” English said.

## Kansas trustees and cooperatives honored at NRECA regional meeting

Four trustees from electric cooperatives in Kansas were recognized at the NRECA Region 7 meeting for their commitment to education before an audience of more than 500 electric cooperative officials.

William “Woody” Barnes, Wheatland, earned his Certified Cooperative Director designation. Earning the Board Leadership Certificates were Ronald Oliver, CMS; Terry Janson, Victory; and Patrick Riley, Wheatland.

The Region 7 meeting was held in Cheyenne, WY, on October 14-15. Representatives of electric co-ops from Wyoming, Kansas, Colorado, and Nebraska gathered to share their experiences and discuss the physical, financial and political challenges facing the electric utility industry.

Several cooperatives received recognition during the meeting, including Wheatland and Victory, who were recognized for having 100% Board and Management enrolled in ACRE’s

Century Club. At the ACRE breakfast, Kansas received honors for being top in the region regarding ACRE memberships. Kansas now has 426 total members, with 355 Regular, 61 Century and 10 President’s Club members.

At the NRECA International program, Butler was recognized as a National partner. Heartland, Midwest Energy, KEPCo, Sunflower, and KEC were recognized as Community partners. Contributions made by electric cooperatives are clearly growing the electric cooperative family worldwide. There are more electric cooperative members in countries assisted by NRECA International than in the U.S.

The NRECA Region 7 meeting was the fifth in a series of seven 2009 Regional Meetings convened by NRECA. These meetings continue the association’s grassroots policymaking process, which begins at the local co-op level and culminates at NRECA’s Annual Meeting, to be held in Atlanta, GA, February 15-17, 2010.

**Feds release \$2.6 billion for LIHEAP**

The federal government has released more than \$2.6 billion in funding for the Low Income Home Energy Assistance Program (LIHEAP), with approximately \$45.3 million being awarded to Kansas, officials announced October 22.

According to figures for 2008, Kansas provided about 44,000 households with LIHEAP financial assistance. There are more than 170,000 eligible households in the state.

Kansas families receiving LIHEAP assistance have incomes below 130 percent of the federal poverty level.

**Federated launches new member web site**

A new member web site introduced by Federated Rural Electric Insurance Exchange will allow members to file claims online and check on their status, among other new features.

Visitors to [www.federatedrural.com](http://www.federatedrural.com) can also locate current information on property losses, vehicle accidents, workers compensation, and accident prevention. A new "safety knowledge base" includes online self-study courses and training modules for groups.

**KCC approves Westar rate consolidation**

Kansas Corporation Commission issued an order approving the consolidation of rates for customers in Westar North and Westar South territories. KCC staff will file a motion within 30 days setting forth a proposal for opening an investigation to address the question of how to proceed with rate consolidation, including a proposal regarding a collaborative process involving all the parties.

KCC NEWS RELEASE – 10/26/09

**NOVEMBER**

- 12 **KEC Budget and Operations Committee**, conference call, 9 a.m.
- 12 **MDM Meeting**, KEC Headquarters, Topeka, 10 a.m.
- 16 **Midwest Energy Annual Meeting**, Meeting at 1:30 p.m., Fort Hays State University, Hays.
- 17-19 **Administrative Workshop**, Marriott, Wichita.
- 18 **KEPCo Board of Trustees meeting**, Ramada Inn, Salina, 2 p.m.
- 18 **KEPCo Annual Meeting**, Reception 5 p.m. Dinner/Meeting 6 p.m., Ramada Inn, Salina.
- 19 **KEPCo Board of Trustees Meeting reconvenes**, Ramada Inn, Salina, 8:30 a.m.
- 20 **Sunflower Board of Directors Meeting**, Sunflower Headquarters, 8:30 a.m.
- 23 **Bluestem, DS&O, Nemaha-Marshall, Rolling Hills Legislative Dinner**, Country Club, Clay Center, 6:30 p.m.
- 26-27 **KEC Office closed**, Thanksgiving holiday.
- 30 **DS&O and Rolling Hills Legislative Dinner**, Smoky Hill Winery, Salina.

**DECEMBER**

- 2-3 **KEC Board of Trustees Meeting**, Marriott Hotel, Wichita.
- 16-17 **KEPCo Board of Trustees Meeting**, KEPCo Headquarters, Topeka.
- 18 **Sunflower Board of Directors Meeting**, Sunflower Headquarters, Hays.

**Kansas Cooperative Hall of Fame nomination sought**

Nominations for 2010 are now being accepted for the Kansas Cooperative Hall of Fame. The Hall of Fame, sponsored by the Kansas Cooperative Council, is important for recognizing the contributions of co-op pioneers and honoring those who have gone "above and beyond the call" in advancing the cooperative philosophy.

Since it was established in 1999, 24 individuals from all types of cooperatives have been inducted into the Kansas Cooperative Hall of Fame. Each December, the Council asks for nominations for additional inductees.

To download the nomination form, visit [www.kansasco-op.coop](http://www.kansasco-op.coop). The nomination deadline is Dec. 14, 2009.

upcoming training

**KEC offers administrative conference**

KEC is offering a conference for administrative personnel from November 17-18 at the Wichita Marriott.

Attendees will gain a better understanding of how to handle peers and members, learn computer shortcuts, and learn how to deal with hostile/sexual harassment situations in the workplace.

**Conference Schedule - Nov. 17**

- ▶ Generation Gap & Technology Etiquette – Gail Hermesch
- ▶ Attitude & Change, Creating a Positive Impact – Gail Hermesch
- ▶ Crucial Conversations and Crucial Confrontations – Lynn Moore

**Conference Schedule - Nov. 18**

- ▶ FEMA/KDEM "What Worked and What Didn't Work" – KDEM staff

- ▶ Tips & Tricks of Word & Excel 2007 – Lisa Hanson
- ▶ Tips & Tricks of PowerPoint & Outlook 2007 – Lisa Hanson

**Conference Schedule - Nov. 19**

- ▶ Hostile Workplace & Sexual Harassment: What Everyone Needs to Know – Susan Olander and Bill Birkeness
- ▶ Little Known Facts – Chaz Allen

Registration for the workshop is \$250 for KEC members and \$400 for non-members (snacks and handouts included).

The course will be held at the Marriott Hotel in Wichita. Registration is limited to 40 attendees. To attend this workshop, please e-mail Carol Dorr at [cdorr@kec.org](mailto:cdorr@kec.org).

## Co-op members may be due cash and property

Kansas State Treasurer Dennis McKinney is asking all utilities in the state to help locate people for whom the treasurer's office may be holding money or valuables.

Each year, utilities, banks, businesses and organizations turn over about \$20 million in unclaimed funds that they are holding for Kansans to the state treasurer's office. In addition, nearly 600 lost or forgotten safe deposit boxes are sent to the state when banks can no longer find the owner of the contents.

"Kansans value private property rights, and as custodian of this unclaimed property, we take the responsibility to reunite people with their assets very seriously," McKinney said.

The reporting of utility deposits, inactive savings and checking accounts, un-cashed checks, stock shares and bonds, dividend checks, insurance proceeds, and mineral royalties is required by state law under the Unclaimed Property Act. To date, the Treasurer's Office has over \$208 million worth of unclaimed property and over 12,000 safe deposit box properties on file.

Kansans can call the State Treasurer's Office at 800-432-0386 or visit [www.kansascash.com](http://www.kansascash.com).

### Twin Valley welcomes Hucke as new director

Twin Valley Electric would like to welcome Bryan Hucke to its Board of Directors.

Hucke was appointed to complete the term for the District 1 seat that was held by Norman Leistikow. Leistikow resigned from the board when he and his wife, Marion, moved off co-op lines.

Hucke and his wife, Loretta, have two children and live just outside of Parsons. Hucke has 29 years of farming and ranching experience.

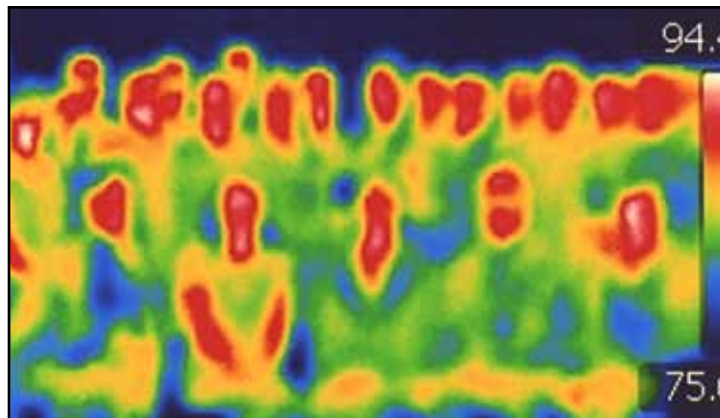
Hucke said that his goal as serving as a Director on the Board is to help ensure that members of the cooperative receive affordable and reliable electricity.

## Energy efficiency, social networking topics of KMSDA meeting

Dozens of Kansas cooperative member services and communication staff attended the Kansas Member Services Directors Association 2009 Fall Meeting, Oct. 14-16 in Wichita.

The meeting began with a session on social networking and how it can be used by the cooperatives.

Other topics included an update on the Efficiency Kansas program from the Kansas Energy Office, a discussion on the time of use rates, and workshops on both digital photography and residential energy audits.



The KMSDA group as taken on an infrared camera by Von Kopfman, IAQ Solutions. The attendees learned about energy audits and the tools used to perform the energy audits. Infrared technology can be used in energy audits to identify spots in a home where warm or cool air is escaping.

### National Science Foundation awards grant to Kansas universities

The National Science Foundation has awarded \$20 million to Kansas universities to study climate change and renewable energy.

The five-year award goes to the Kansas Experimental Program to Stimulate Competitive Research, a statewide program that includes the University of Kansas, Kansas State University, Wichita State University and Haskell Indian Nations University; three Kansas-based companies: Abengoa Bioenergy, MGP Ingredients and Nanoscale; and two companies outside of the state: ADM (Illinois) and Netcrytals (California) in a massive research effort.

The initiative will also be supported by \$4 million in matching funds from KU, K-State and Kansas Technology Enterprise Corporation.

The Climate Change and Renewable Energy initiative is to span a variety

of disciplines, with five team leaders. Chuck Rice, University Distinguished Professor of Agronomy at K-State, leads the group that will use climate modeling tactics to predict the effects of climate change. Dietrich Earnhart, associate professor of economics at KU and colleagues will assess how farmers make decisions about which crops to grow. Judy Wu, University Distinguished Professor of Physics at KU, will explore the use of nanotechnology to harness solar energy with a cadre of scientists and engineers. Dan Wildcat, director of Haskell Environmental Research Studies Center and acting vice president of academic affairs at Haskell, and Joane Nagel, University Distinguished Professor of Sociology at KU, will work with tribal college students in exploring climate change and energy issues on Native American lands.

### Spend like Santa and save like Scrooge

Are you in need of a great holiday gift idea or something to celebrate the upcoming 75<sup>th</sup> anniversary of electric co-ops? Order Local Lights, the sequel to The Next Greatest Thing, at up to 30 percent off through December 2009. Visit [www.locallights.coop/order.htm](http://www.locallights.coop/order.htm) to take advantage of discounted prices during the holiday season.

### Bluestem's Mike Morton celebrates 25 years

Mike Morton, Bluestem's Assistant Manager, recently celebrated 25 years with the cooperative.

Morton was recognized for his years of service with a commemorative rural electric cooperative watch and a gift certificate.

Congratulations on this great achievement!

**Twin Valley seeks director of operations**

Twin Valley is accepting applications for a director of operations.

Must have a high school diploma and at least 10 years of utility experience, preferred college with a degree in related field.

Successful candidate will supervise, direct and control construction, operations, and maintenance of the distribution and substation facilities, as well as developing competent, skilled line workers. Provide for safety training and compliance as required for NRECA Safety Accreditation, OSHA Regulations and co-op procedures and policies. Investigate, survey and design the construction of electric distribution lines. Responsible for obtaining all nec-

essary legal documents required for the construction of electric facilities. Will monitor the status of the system's distribution facilities.

TwinValley offers a competitive wage and benefit package. Send resume to TVEC, PO Box 368, Altamont, KS. EOE.

**DCCC seeks instructor**

Dodge City Community College seeks electrical power technology program instructor to teach Electrical Power Technology courses. Visit [www.dc3.edu](http://www.dc3.edu) for position description and application. Send an application, cover letter, resume, and transcripts to Sheila Bergkamp, Human Resources, DCCC, 2501 North 14<sup>th</sup> Ave., Dodge City, KS 67801, or email [bergkamp@dc3.edu](mailto:bergkamp@dc3.edu).

**Jim Watson**

Jim Watson, former LJEC manager, passed away on Tuesday, September 29 in Pittsburg.

He was a veteran of World War II, serving in the United States Army from 1942-1946.

In 1947, Watson was hired as LJEC's Assistant Manager. He served in that capacity until May 1951 when he was promoted to General Manager. Watson guided LJEC for the next 22 years, retiring from LJEC in December 1973.

Memorials can be made to the Tonganoxie VFW Memorial Post #9721 or the United Methodist Church in Opolis. Memorials can be mailed to the Bath-Naylor Funeral Home, 522 S. Broadway, Pittsburg, KS 66762.

**Kansas Touchstone Energy Executive Council holds annual meeting**

The Touchstone Energy annual meeting was held at the Wichita Marriott on Nov. 3.

Guest speaker, NRECA's Alan Shedd, reviewed the Touchstone Energy program, highlighting several programs including the "Together We Save" program and its online resources.

The Kansas Touchstone Energy Executive Council reviewed the current statewide programs and the 2010 proposed budget.

In a unanimous election, Leon Eck, Rolling Hills; Kirk Thompson, CMS; and Travis Griffin, Butler were all re-elected to the council. Reappointed were Thompson as Chair, Eck as Vice Chair, and Dennis Deines as Secretary/Treasurer.

**Kansas cooperatives attend KEC District Meetings**

Hundreds of Kansas cooperative managers, trustees and key staff attended the KEC District Meetings that were held around the state from Oct. 26-30. The locations of the meetings included Parsons, Hays, Dodge City and Topeka.

Several elected officials spoke at the meetings, including Rep. Lee Tafanelli, Rep. Don Hineman, Rep. Jerry Williams, and Sen. Ruth Teichman.

As part of the meetings, CFC's Rod Crile gave an industry update. He identified key issues within the industry, including new generation, carbon constrained world, financing, global economy, current economic conditions, hiring and retaining employees, new directors, technology, energy & fuel prices, and communications.

Elected to represent their districts on the KEC Executive Committee were: Leah Tindle, District 1; Harlow Haney, District 2; Gary Frieling, District 3; and Perry Rubart, District 4.

**RuralPower**

**Kansas Electric Cooperatives, Inc.**  
 PO Box 4267  
 Topeka, KS 66604-0267

**Electronic Edition**

*Rural Power is published every three weeks on Fridays. This electronic version is provided to you as a service of KEC. If you would like to receive personal e-mail notice of this publication in electronic format or discontinue such notice, please e-mail [sholsteen@kec.org](mailto:sholsteen@kec.org).*