



PO Box 4267  
Topeka, KS 66604-0267  
Phone: 785-478-4554  
Website: [www.kec.org](http://www.kec.org)

A Touchstone Energy® Cooperative



*Rural Power is published bi-weekly on Fridays. This electronic version is provided to you as a service of KEC. If you would like to receive this publication in electronic format or discontinue it, please e-mail [sholsteen@kec.org](mailto:sholsteen@kec.org).*

Vol. LIII, No. 14

Cooperatives: United We Stand

August 1, 2003

## What's Inside?

Calendar p. 2

News from Kansas Co-ops p. 3

Cooperative Youth Leadership Camp p. 4

CFC Outlook Brightens p. 5

KCRE Golf p. 6

## Energy Bill Work Continues in U.S. Senate

NRECA called statewide managers and G&T representatives to Washington D.C. last week to work on the Electricity Title of the Energy Bill with their U.S. Senators.

Representing Kansas was KEC's Executive Vice President, Barry Hart.

Capitol insiders expect the Senate to make the Energy Bill a priority and some expect passage by the Senate sometime this month. The U.S. Senate began work on the Energy Bill this week. Rural electric cooperatives so far in the Senate have made significant gains in the legislation for their members. Important consumer protections have been agreed to in negotiations with NRECA CEO Glenn English and his staff and the Chairman of the Energy Committee, Senator Pete Domenici (R- NM). As a result of consumer protections placed in the bill by Domenici, NRECA and all the electric cooperatives in the country are supporting the bill as is.

While participating in the Legislative Fly-In, Hart received an update on the status of negotiations with NRECA and Sen. Domenici, and learned that a compromise exempting cooperatives from FERC regulation was reached when Senator Pat Roberts and other key Republican Senators urged Senator Domenici to not regulate cooperatives in the bill or risk losing their support on the floor for the entire Energy Bill. As a result of Sen. Domenici putting in language favorable to electric cooperatives, NRECA is now supporting the Domenici electricity proposal.

Hart also called on U.S. House members from Kansas, including Congressmen Jerry Moran, Jim Ryun, and Dennis Moore to update them on the bill.



*From right: Chuck Penry, NRECA lead lobbyist in the Senate on the Energy Bill, and Dena Stoner, Vice President and Director of Government Relations, speak with electric cooperative representatives at the fly-in.*

Hart explained to their energy staff why cooperatives support the Senate language over the language earlier passed in the House. KEC and NRECA asked the Congressmen for assistance in convincing House leadership why the Senate Electricity Title version of the Energy Bill is better.

One example of the benefits of the Senate version is the authority for tradable tax credits that electric cooperatives will be able to take advantage of on renewable energy projects and clean coal technology projects.

Investor-owned utilities presently have the ability to offset the high cost of such projects with tax credits.

Once the U.S. Senate passes its version of the Energy Bill, the next challenge will be in conference committee. NRECA and electric cooperatives will be working to ensure the positive changes that have been made in the Senate will not be lost in the committee.

"The Legislative Fly-In and our participation was critical to make sure House and Senate supporters of electric cooperatives understand exactly where the energy bill is in the process and how the various proposals being offered affect our members and rural America," Hart said. "We are so thankful that all of our Kansas Congressional delegation understand how our members are affected here in Kansas and are supportive of changes that have been made that benefit rural Kansas. This is possible because our Kansas House and Senate members listen to our views and most importantly keep in close contact with us to understand the effects before they vote."



Have an idea or a story for Rural Power?

Call (785) 478-4554

Fax (785) 478-4852

or Email

[sholsteen@kec.org](mailto:sholsteen@kec.org)

## Cooperative Calendar

August	2	NRECA Board Leadership Course "Governance and Policy Issues for a New Century", Marriott Hotel, Overland Park, 9:00 a.m. - 4:00 p.m.	
	2	Executive Committee Meeting, Marriott Hotel, Overland Park, 12 -1 p.m.	
	3	NRECA "New Board Challenges", Overland Park, 1:30-4:30 p.m.	
	3	Budget and Operations Committee Meeting, Marriott Hotel, Overland Park, 11:00 a.m.	
	2-4	KEC Summer Board Meeting, Marriott Hotel, Overland Park.	
	7-8	Kansas Material Managers Assoc. Meeting, Country Inn & Suites, Salina.	
	7-9	Belleville Midget Races, Belleville.	
	15	Sunflower Board Meeting, Sunflower Hdqtrs, Hays, 8:30 a.m.	
	21	KEPCo Board Meeting, KEPCo Hdqtrs, Topeka, 8:30 a.m.	
	22	KCRE Golf Open, Salina.	
	28	Eastern MDM Meeting, KEC Headquarters, Topeka, 10:00 a.m.	
	September	5	Apparatus Testing Committee Meeting, Holiday Inn, Great Bend, 10 a.m.
		5	LCS&C Committee Meeting, Holiday Inn, Great Bend, 1 p.m.
10		Leavenworth-Jefferson Annual Meeting – Dinner at 6:00 p.m., Meeting at 7:00 p.m. at McLouth High School Purple Gymnasium, McLouth.	
11-12		Kansas REC Managers Association Meeting, Plaza Inn, Garden City.	
13		Kansas Electric Cooperatives State Fair Day.	
18		KEPCo Board of Trustees Meeting, KEPCo Headquarters, Topeka.	
19		Sunflower Board of Directors Meeting, Sunflower Headquarters, Hays.	
25		Eastern MDM Meeting, KEC Headquarters, Topeka, 10:00 a.m.	
25-26		Kansas Line Supervisors Meeting, Manhattan.	
29-30		Kansas Wind Energy Conference, Airport Hilton, Wichita.	
October	1	KEC Standing Committees, Holiday Inn Select, Wichita.	
	2	KEC Board Meeting, Holiday Inn Select, Wichita.	
	6-8	Region VII Meeting, Marriott Hotel, Overland Park.	
	16	KEPCo Board of Trustees Meeting, KEPCo Hdqtrs, Topeka, 8:30 a.m.	
	17	Sunflower Board Meeting, Sunflower Hdqtrs, Hays, 8:30 a.m.	
	20-24	NRECA Certified Key Accounts Executive Fast Track, Tampa, FL.	
	22-24	Kansas Accountants Club Meeting, Holiday Inn, 3606 Vine St., Hays.	
	23	Eastern MDM Meeting, KEC Headquarters, Topeka, 10:00 a.m.	
November	5	KEC District 3 Meeting, Agricultural Research Center, Hays.	
	6	District 4 Meeting, Knights of Columbus Building, Dodge City.	
	13	District 1 Meeting, Flint Oak Lodge, Fall River.	
	14	District 2 Meeting, KEPCo Headquarters, Topeka.	
	19	Kansas Electric Power Cooperative (KEPCo) Annual Meeting – Dinner at 6:00 p.m. Meeting immediately following Dinner, Holiday Inn, Salina.	
	20	KEPCo Board Meeting, Holiday Inn Holidome, Salina 8:30 a.m.	
	21	Sunflower Board of Directors Meeting, Sunflower Hdqtrs, Hays, 8:30 a.m.	
December	3	KEC Standing Committees, Holiday Inn Select, Wichita.	
	4	KEC Board of Trustees Meeting, Holiday Inn Select, Wichita, 8:30 a.m.	
	18	KEPCo Board of Trustees Meeting, KEPCo Hdqtrs, Topeka, 8:30 a.m.	

## Upcoming Workshops

### Advance Your Management Career

The new training program - Accepting a Management Role - will be offered at NRECA's 2003 Cooperative Managers & Supervisors Conference August 18-20 in San Antonio, TX.

This course helps you identify what employees want from managers, identify what organizations want from managers, avoid the six myths of management, manage different work styles, delegate for success, and deal effectively with difficult people.

For more information, call Valerie Taylor, NRECA, at (703) 907-5697.

### NRECA Region VII Meeting Overland Park Marriott, Kansas Sunday, October 5

Pre-Regional Training  
CCC Exam

### Monday, October 6

Orientation Session for New  
First-Term Directors

### October 6 - 8

Regional Meeting

*Advance registration deadline date:  
September 26, 2003.*

To register for the NRECA Region VII meeting, call (703) 907-5918. For more information on the CCC exam, contact Matt Rhoades, NRECA, (703) 907-5722, [matt.rhoades@nreca.org](mailto:matt.rhoades@nreca.org).

## Plan Now to Attend the New and Emerging Technologies Conference (NET 2004) January 14-17, 2004 at the Doral Golf Resort & Spa in Miami, FL.

Don't miss these pre-conference events designed for key account managers:

**Key Accounts Summit - January 13, 2004** (*Co-op employees only*)

**Strategic Energy Planning Workshop - January 12, 2004** (*Free for key account managers!*)

**Advanced Key Accounts Training Course - January 12, 2004** (*Enrollment limited to CKAEs*)

**The NET 2004 Conference gives you the chance to** budget now to bring your key accounts and add value to your business relationship, arm yourself with the latest information on the technologies revolutionizing how you and your customers do business, and build stronger partnerships with your key accounts and national energy and facility managers. For more information contact [Kathryn.Momot@nreca.coop](mailto:Kathryn.Momot@nreca.coop), (703) 907-5707.

# News from Kansas Cooperatives

## High Line Services Receives KDOCH Grant

High Line Services, a subsidiary of Lane-Scott Electric Cooperative, received a \$40,000 workforce grant from the Kansas Department of Commerce and Housing. This grant has boosted an on-going training program that is educating employees for this new company in Dighton.

Staffed with 21 employees, High Line Services has committed \$144,000 over the next few years for training purposes. This amount is enhanced by the Kansas Industrial

Training grant that is awarded to new and expanding companies.

“High Line Services has filled a void in western Kansas by providing support for local electric cooperatives that need upgrading and maintenance of their systems,” said Earl Steffens, Lane-Scott’s general manager.

High Line Services provides pole testing and inspection, power line and transmission construction and an infrared testing system. The company also offers tree trimming, storm restoration services and telecommunications and fiber optics services.



Earl Steffens, Lane-Scott's manager, visits with Barry Hart, KEC's Executive Vice President, at Lane-Scott's annual meeting.

## ElectroRally Championship Results

This season, 48 cars representing 26 Kansas high schools competed for the 2003 ElectroRally Championship. The results were based on a report each team was required to submit, as well as two state races, the Aquila Electric Showdown and the Touchstone Energy ElectroRally. The paper was worth 10% of the final score, while the two races were each worth 45%.

The results for the 2003 State Championship are: Advanced Class - Scott Community H.S., Experimental Class - Deerfield H.S., Novice Class - Chapman H.S.I., Written Report - Scott Community H.S., RC Pete Loux Best Car Design - Scott Community H.S., and School Spirit Award - Mulvane H.S.



## Employment Opportunities

### Twin Valley Seeks General Manager

Electric distribution cooperative serving approximately 2,450 meters in southeast Kansas seeks a qualified manager to succeed current general manager.

Candidates should possess a broad knowledge of electric distribution system management, including planning, finance, operations, personnel management and membership/public relations. The ability to work effectively with a member-elected board of nine trustees is essential. A college degree in an appropriate field is preferred. A strong personal commitment to the cooperative philosophy and to bettering the quality of life in the rural area served is required.

The cooperative has 15 full-time employees and over 940 miles of distribution line. Total utility plant investment approximately \$9.2M; gross operating revenues, approximately \$3.3M. The cooperative is headquartered in Altamont, approximately 50 miles west of Joplin, MO.

Salary commensurate with experience and qualifications. Excellent benefits. Send resume with three references and salary history to: Board of Trustees, Twin Valley Electric Cooperative, Inc., PO Box 385, Altamont, KS 67330. (EOE).

### Nebraska PPD Seeks Meter Technician Supervisor

Dawson Public Power District has an opening for a Meter Technician Supervisor position.

Candidates must have associates degree in electronics or equivalent from two-year college or technical school; five years related experience and/or training; or equivalent combination of education and experience. Previous supervisory experience is preferred. Position responsibilities include testing, installation, and maintenance of the district's mechanical and electronic meters. Individual will be required to perform tasks with the highest level of accuracy, possess personal computer skills, and play a significant role in the deployment of an automatic meter reading (AMR) system.

Contact Rob Ecklund, manager of engineering, at (308) 324-2386 for more information. Send letter of interest and resume by August 15 to Dawson PPD, Manager of Engineering, PO Box 777, Lexington, NE, 68850-0777. (EOE).

# Kansas Youth Learn About Electric Co-ops

“Camp is a good way to learn about some things you couldn’t learn about anywhere else. You meet people from different states and places, and that makes it all the more interesting,” said Sarah Davidson, a participant of the 2003 Cooperative Youth Leadership Camp sponsored by Flint Hills.

Davidson, along with 28 Kansas youth, joined more than 60 other high school students from Colorado, Oklahoma, and Wyoming at the leadership camp that was held July 19 – 25, at the Glen Eden Resort near Steamboat Springs, CO.

During their weeklong stay in Colorado, the students created a mock cooperative, attended sessions featuring legislative simulations, and visited the Craig generation plant and Trapper Mine.

“These students were wonderful representatives from their co-ops,” said Shana Holsteen, KEC’s Director of Communications. “It’s wonderful for co-op staff to be energized by these student leaders. It’s also a great opportunity for the students to learn about cooperatives and to consider our industry as a possible career path.”

The Kansas youth that attended and their sponsoring cooperatives are as follows: Josh Hutfles and Megan Traffas, Alfalfa Electric; Matthew Clark, Ark Valley; Jacob Simon, Butler; Cassie Orleans,



Clockwise: Students pose in front of the bus, Randy Gerstner (Nemaha Marshall) holds a link at the coal mine, the students relax at the dance, and Tom Maechtle lectured about raptors.

Caney Valley; Paul Carver, DS&O; Adam Bandy and Sarah Davidson, Flint Hills; Oryan Galemore, Heartland; Rane Nolan and Megan Roemer, Lane-Scott; Lisa Smelser, Leavenworth-Jefferson; Shana Lambert and Clayton Theleman, Midland Marketing; Randy Gerstner, Nemaha-Marshall;

Laurie Steffen, Ninnescah; Rykki Belt, Shelby Griffin and Jaci Wilkening

(2003 Ambassador), Pioneer Electric; Eric Burton and Heather Gartrell, Prairie Land; Daniel Kimple and Jared Weseloh, Rolling Hills; Krystal Bordwell, Sedgwick County; Roger Bach, Lani Estes and

James Studtmann (2003 Ambassador), Victory; and Ashley Dopita and Jenna Kennedy, Western.

Many of the leadership positions at the camp were filled by Kansas students. The camp’s nine-member board included Adam Bandy of Flint Hills, Paul Carver of DS&O, and Dan Kimple and Jared Weseloh of Rolling Hills. Carver was also elected as the board president. The camp’s general manager was Laurie Steffen of Ninnescah.

“The best part of camp was just getting out there and meeting people from all over Kansas and from other states,” Carver said. “It was a character-building experience. I thought it would be good to get into the leadership aspect of camp, so I ran for the board. We had different activities to build leadership skills



Sarah Davidson dons a hard hat while touring Trapper Mine.



Paul Clark addresses the campers as their elected Board President.

## at Colorado Leadership Camp

and we also learned about co-ops.”

Steffen agreed that the camp was a good experience. “The whole

atmosphere was so positive. When the applications for general manager were due, I remembered what James Studtmann (the 2003 Ambassador from Victory) said about getting the most out of camp,” she explained. “This camp is definitely a worthwhile experience and a small investment for what you will get out of it. This camp

has refreshed my feeling about wanting to show that there is a lot to be done and a lot we can do.”

In another leadership role, six students are selected as ambassadors. Two ambassadors are selected by their peers from each of the following states: Colorado, Kansas, and Wyoming. These Ambassadors return to camp the following year as junior counselors. This year’s Kansas Ambassadors are Sarah Davidson of Flint Hills and Oryan Galemore of Heartland.

“At first I wasn’t going to apply for the ambassador position, but after I heard from the Ambassadors and saw how much fun they were having, I realized how much camp had grown on me and I wanted to apply,” Davidson explained.

“The best thing about camp was the whole experience and getting to know people from other states,” Galemore said. “It was kind of scary at first. I’m excited to come back and share my experience

from this year to help next year’s campers to not be so scared and help them to open up.”

Galemore said that he was pleased that he had the courage to run for the ambassador position.

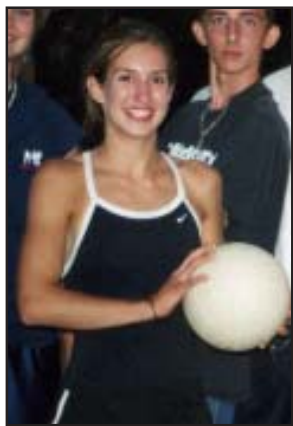
“I decided to just go for it. If you don’t try, you may regret not doing something,” he said.

“Coming to Colorado has changed me for the future. I can now use the information I learned at camp in future careers.

This was an awesome experience.”

This year, Kansas sent

several chaperones to assist with the camp. The chaperones included Ron and Josie Shafer, Alfalfa; Terry Dubbs and Shana Holsteen, KEC; and Ron and Yolanda Rathbun, Rolling Hills.



Laurie Steffen holds the volleyball after her team won the tournament.



Oryan Galemore acted the part of "Mountain Man" during the camp's legislative simulation.



Rane Nolan tries on the lineman's glove while others look on during the electric safety presentation.

## S&P Brightens Outlook on CFC

Last week, Standard and Poor’s (S&P) Ratings Services raised its outlook on CFC from negative to stable.

As S&P explained, “The change in outlook is due to CFC successfully meeting the financial targets Standard & Poor’s set when the ratings were lowered to their current level in April 2001.”

Fitch Ratings improved CFC’s outlook to stable last October. I’m pleased that another major rating agency has recognized all that CFC and its members have accomplished in recent years as we worked hard to further increase our strength. The improved outlook reflects the financial vigor of CFC and the entire electric cooperative network.

The rating targets that S&P had set for CFC included:

- Bringing down commercial paper levels
- Reducing the debt-to-equity ratio
- Reducing exposure to large speculative-grade loans, particularly in the telecommunications sector
- Setting reserves at a level appropriate for the risks associated with the portfolio.

In S&P’s statement announcing the outlook improvement, the rating agency pointed to CFC’s

“strengthened financial position” and listed key CFC strengths:

- Consistent and sound financial performance
- Ability to recover funding costs through a large portfolio of variable-rate loans
- Strong security provisions

CFC relies on the support and cooperation of its members. I want to thank all of you for the help you gave us by making yourselves financially strong and backing CFC in the steps that were and are necessary for this improved outlook.

*Sheldon Petersen*  
CFC Governor and CEO

## Get Charged! For School

It's nearly time for students to go back to school, so now is the perfect opportunity to place your orders for the **Discovery Get Charged! Electricity and You** education kits.

To order, log onto [www.touchstoneenergy.coop](http://www.touchstoneenergy.coop). Click on the **Discovery Get Charged!** icon and then key in your user name and password. If you need a user name and password, contact [marie.jepson@nreca.coop](mailto:marie.jepson@nreca.coop), (703) 907-5627. Once you access the page with all of the partnership elements, just scroll to the bottom to access the order form.



At the time of ordering, be prepared to key in your list of schools in your service area. If you need to order a sample, just key in the word "Sample" on the school line provided. There is a \$20 charge per "Sample" kit requested.

Once you complete your order, you will need to print out the order confirmation and mail it to *projectWorks* (address provided on the confirmation page).

Pricing for the kits are as follows:

- One "complimentary" kit per middle/junior high school (grades 5-9) in your service area = \$20/kit (for shipping and customization)
- Additional kits = \$100 per kit (includes shipping and customization)
- Additional 10-packs of Student Activity Books = \$30 (includes shipping and customization)

Please feel free to contact Shana Holsteen, KEC, at [sholsteen@kec.org](mailto:sholsteen@kec.org) or (785) 478-4554; or Cynthia Henthorn and Marie Jepson at (703) 907-5627 for further assistance.

## 7<sup>th</sup> Annual KCRE Golf Open

Salina Municipal Golf Course  
August 22, 2003

The 7<sup>th</sup> Annual KCRE Open will be held at the Salina Municipal Golf Course on Friday, August 22. Registration begins at 7:30 with Tee-time at 8 a.m. The cost for cart, green fees, mulligans and a Subway sandwich is \$50 per person. The KCRE Open is the premier fundraiser for the Kansas Committee for Rural Electrification, and the committee is hoping it will be well attended again this year.

You don't have to be a good golfer to participate, just grab some partners and sign up. Everyone is

welcome to golf, so ask your golfing buddies to join you.

If you don't have a team, enter as an individual and you will be teamed up with other singles.

Those of you that have attended in the past can

attest to the fun and camaraderie of fellow co-op members.

This event is vital to the success of KCRE's legislative efforts and, at the same time, allows for new and renewed friendships and good times. Even if you can't make it, sign up, help sponsor a hole/tee box (or both), or donate a prize. Your efforts will be appreciated.

Contact Kirk Thompson, P.O. Box 790, Meade, KS, 67864 (telephone 620-873-2184, fax 620-873-5303) or Ken Maginley (785-456-2212) for more information, or to sign up. Those who return their registration form to Kirk by August 15 will be entered into a \$25 cash drawing.



## The Collection Continues!

The 2003 "Willie" ornament measures 2-5/8" and is packaged in a gift box. It is the perfect gift idea for all the folks on your holiday list! The ornament also makes a fun party favor or a decorative flourish to your holiday packages.

KEC will be placing a "bulk order" to get the ornaments at a reduced price. If you would like one of these ornaments at the reduced price, please contact Shana Holsteen at KEC, or email [sholsteen@kec.org](mailto:sholsteen@kec.org), with the quantity you would like.

As these ornaments are available on a first-come, first-served basis, **please place your order by August 29, 2003.**

